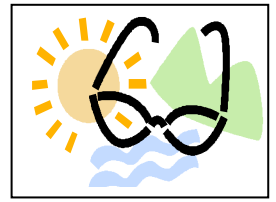


LANSLOWNE NEIGHBORHOOD NEWS

IMPORTANT MUST READ INFO ON BACK

July 2009

www.Lansdowne-Suwanee.com



AGE REQUIREMENTS FOR POOL USE

Children must be **15 years** of age to swim without an accompanying adult when the lifeguard is on duty and **18 years** to swim without an adult attendant or lifeguard.

NO OVERNIGHT PARKING AT CLUBHOUSE

Please be advised:
Residents and their guests are not to park at the clubhouse parking lot overnight. Violators will be towed at the owners expense.



YOGA CLASSES OFFERED



Dust off your work out mats.

YOGA classes are now being offered to residents at the clubhouse on Thursdays at 7 pm. There is a \$5.00 charge per class and a mat or towel is needed as well as a bottle of water. Please RSVP to **Rosie Rainieri** at rosie_@charter.net or **678-765-0180**.



WELCOME NEW NEIGHBORS



Let's all extend a great big "Welcome" to our new residents!

Mark and Monica Harrison

Brianna, Kaden and Quinn
715 Amberton Close

Ron Walton and Heather Bailey

TJ, Isabella and Isaac
730 Amberton Close

David and Wendy Csaszar

Amanda, Jessica & Justin
880 Landover Crossing



SOCIAL COMMITTEE NEEDS VOLUNTEERS

It's not too early to think about how you can get involved in keeping Lansdowne a great neighborhood to live in. **John and Linda Buchanan** will be rotating off the Social Committee in a few months and we need some resident volunteers to step up.

Please contact the Buchanans at: jlrks@gmail.com



OUT OF SIGHT – OUT OF MIND



1. Per our covenants, **Trash Cans** must be **stored out of view** from adjacent property and streets.
2. **No Boats, Campers, Trailers, and Jet Skis, without limitation**, can be stored in open view within the community.

Please be considerate of your neighbors.

Thank you in advance for your cooperation.

If you have any questions please contact: Charles Gridley
– ARC Committee at: Charles_Gridley@yahoo.com

NEIGHBORHOOD BULLETIN BOARD USE

The bulletin boards that are located at the pool parking lot and back exit through Forest Plantation are primarily for the Lansdowne Board and Social Committee use. Please do not remove posters/bulletins intended for the neighborhood.



PUT ON YOUR WALKING SHOES



The kiddos will be off to school before you know it. If you would like to join up with our walking group again, please contact: **Linda Buchanan: jlrks@gmail.com**



NO STREET PARKING



Vehicles are to be parked:

- 1st – in the spaces provided in the garage.
- 2nd – in the spaces provided on the driveway.

Please do not make the street a parking space.
By the way, you can't park on the GRASS either.
Questions? Refer to your Covenants.

DOWN THE DRAIN DISASTER!

What you pour down your drains can come back "up" to haunt you! Back in the spring several residents on **Landover Crossing** got an unpleasant surprise when sewage spilled back up into their homes due to clogged sewer lines at the bottom of our neighborhood. Yards were torn up in order to clear the clog and basements had to be redone and don't forget the "GROSS" factor! PLEASE don't pour grease or greasy food down your drains. Help prevent another disaster!



SCHOOL DAYS, SCHOOL DAYS



Where has the summer gone? It won't be long before those big yellow buses start making tracks in our neighborhood again.

With that in mind,

PLEASE be extra careful when driving to/from work.

Parents, remind your kids to move over to the curb when cars approach.

MOORE ROAD FENCE MAINTENANCE

For those of you that live along Moore Road, please keep debris and trees away from the fence. This will help keep our fence around for many years to come!

GOT QUESTIONS?

Remember, if you have a question (or a suggestion) for one of our board or committee members, you can send them an email via the links provided on our website:

www.Lansdowne-Suwanee.com



REMEMBER THE LEASH LAW



All Lansdowne dog owners, there have been several incidents lately with dogs roaming the neighborhood. Remember, if your dog is not contained by a fence or an invisible fence system, they need to be on a leash while outside

Also, a great big “Thank you” for keeping Lansdowne clean by picking up after your pet’s “potty break.”

TENNIS COURTS GET A NEW LOOK

Our tennis courts received a much needed resurfacing job the end of May. If you haven’t seen them yet, drop by for a look-see. They look great with the new color combo of Blue and Green!

Gotta keep up with the latest tennis court fashion! Thanks go out to **Tripp Harris** for obtaining bids and coordinating the resurfacing.



YARD OF THE QUARTER



Congratulations to...

Chuck and Renee Shallot. They were nominated for Yard of the Quarter. They will receive a \$25.00 gift certificate to Home Depot.

We are currently in our third quarter of the year and are accepting nominations again. To cast your vote, go to our website and click on the link provided on our home page!



WATER RESTRICTIONS



The current statewide non-drought outdoor water use schedule is:

- **Odd numbered** addresses are allowed to use water outdoors on: Tuesdays, Thursdays and Sundays
- **Even numbered** addresses are allowed to use water outdoors on: Mondays, Wednesdays and Saturdays
 - No watering on Friday.
- Water use may occur at any time of the day on the assigned days, however landscape watering is **discouraged** between 10 a.m. and 4 p.m. because of decreased effectiveness.

For a list of exemptions please refer to the Gwinnett County website: www.GwinnettCounty.com

ARE WE HAVING A GARAGE SALE?

There have been several inquiries. We just need someone to step up and offer to “run the show”. Any takers? Please contact Kelly VanScoy

AN EVENING OF MUSIC AND FUN



Lansdowne neighbors were treated to a perfectly pleasant evening with Grover Mollineaux singing and playing his guitar. A great big “Thank You” to him and his wonderful wife Terri for making the trek to perform for us all the way from Lexington, KY. A special thanks is in order for **Debbie and Steve Gill** for setting up tables, for **Ken Lundin** who helped in the clean up, and of course, for **Marcus Schrichte** who smoked ribs and chicken for all to enjoy!



MUST READLANSDOWNE NEWSLETTER – GOING GREEN!!!



This issue of the Lansdowne Neighborhood News will be our last paper version of the newsletter. We are going green and saving the Association some green at the same time.

Future issues will be sent via the automated email bulletin system provided by our Webmaster – Joyce Wilmot. So, don’t get left in the dark.

In order for you to receive our newsletter in your inbox, **you will have to sign up.** Please go to our website:

www.Lansdowne-Suwanee.com

From the home page, click on “**Need a login? Click here to register.**” Once you are verified, as a Lansdowne resident, you will automatically start receiving important neighborhood bulletins *and* our newsletter.

We encourage all residents to take advantage of this service so that you can stay informed!

if you are already receiving Lansdowne bulletins, you will not need to sign up again

We would also like to thank our **Street Captains** for their commitment in delivering your newsletters the last couple of years!